

PASSPORT PERSONALIZATION SYSTEMS

Passport Input feeder:

The operator simply places booklets into a special cassette and then stacks up to 20 cassettes into the input tray. The cassettes are fed into the system automatically. Key lock available upon request

Vision System

A camera identifies passports with pre-printed information such as a number or barcode. XY autopositioning can be easily configured with dedicated web tool.

Chip Encoder for e-Passports

The system enables loading of personal data into the integrated electronic contactless chip. The unit can be equipped with 1 heads and it can be placed on both sides of the booklet. The unit verifies whether data is applied correctly.

Barcode reader

The system can include a barcode reader to read preprinted labels to identify job file

Laser Module

The system performs the laser engraving of the photo and personal data on the front side of the datapage. The data is aligned relative to pre-printed marks using a camera. Several laser engraving options are available such as tactile laser engraving and the application of an MLI, CLI or SLI feature. The quality of the laser engraving is high, allowing hidden information to be incorporated in the photograph.

Vision Quality control unit

Camera cross check all applied visual data and features with OCR and OCV functions

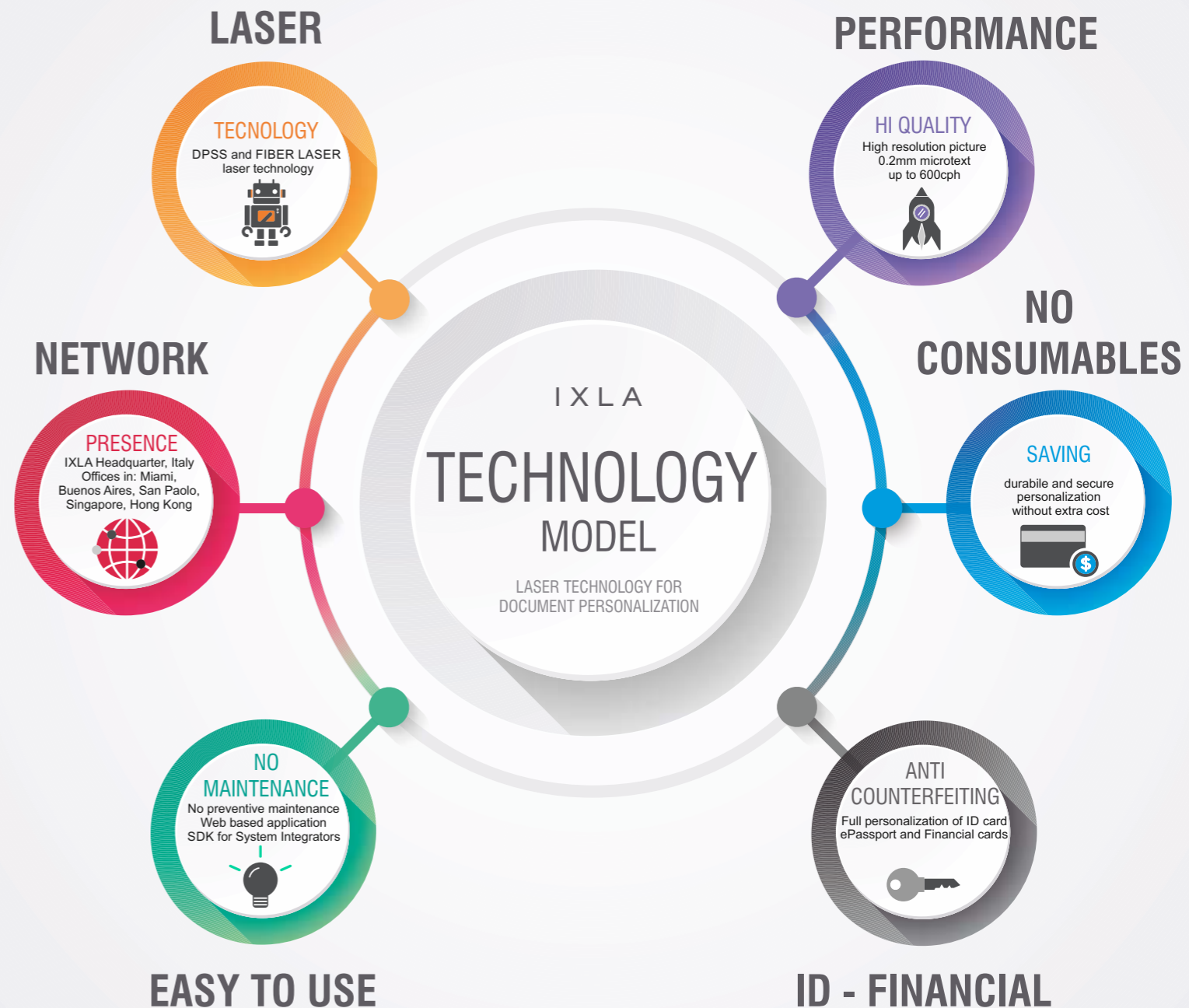
Card output stacker

Finished and approved passports are stacked in the output tray where the operator can remove them at any time, also during operation.

	XP24 10W	XP24 20W	XP24 Jet
Laser Type	DPSS	Fiber Laser	DPSS
Laser Power (W)	10	20	10
Passport input feeder	20 Booklets	20 Booklets	20 Booklets
Passport output stacker	20 Booklets Optional	20 Booklets Optional	20 Booklets Optional
XY Autopositioning	yes	yes	yes
OCR	Optional	Optional	Optional
Barcode Reader	Optional	Optional	Optional
RFID Chip encoder	yes	yes	yes
ContactLess	ISO14443 Part 1 to 4 type A/B =CL & Mifare Complete Mifare Family supported (Ultralight, 1K, 4K, DESFireEV1, Plus, ProX, SmartMX...)		
Vision System	5 MegaPixel Compact industrial camera with USB 3.0 Gray scale and color versions Pattern match (XY autopositioning). OCR/OCV		
Maximum throughput (pph)	60	100	50
Power Absorption	300W	300W	300W
Cooling	Air	Air	Air
Provision for external air vacuum	Yes	Yes	Yes
Active Carbon Filter	Yes	Yes	Yes
Laser protect inspection window	Yes	Yes	Yes
CLI	Optional	Optional	Optional
MLI	Optional	Optional	Optional
SLI	Optional Mirrors	Optional Mechanical	Optional Mirrors
Software	SDK and I3 Web App	SDK and I3 Web App	SDK and I3 Web App
Size cm	53x 53x42	65x55x43	65x65x42
Weight Kg	42	45	65



ID Technology, Laser Experts, Security Solutions

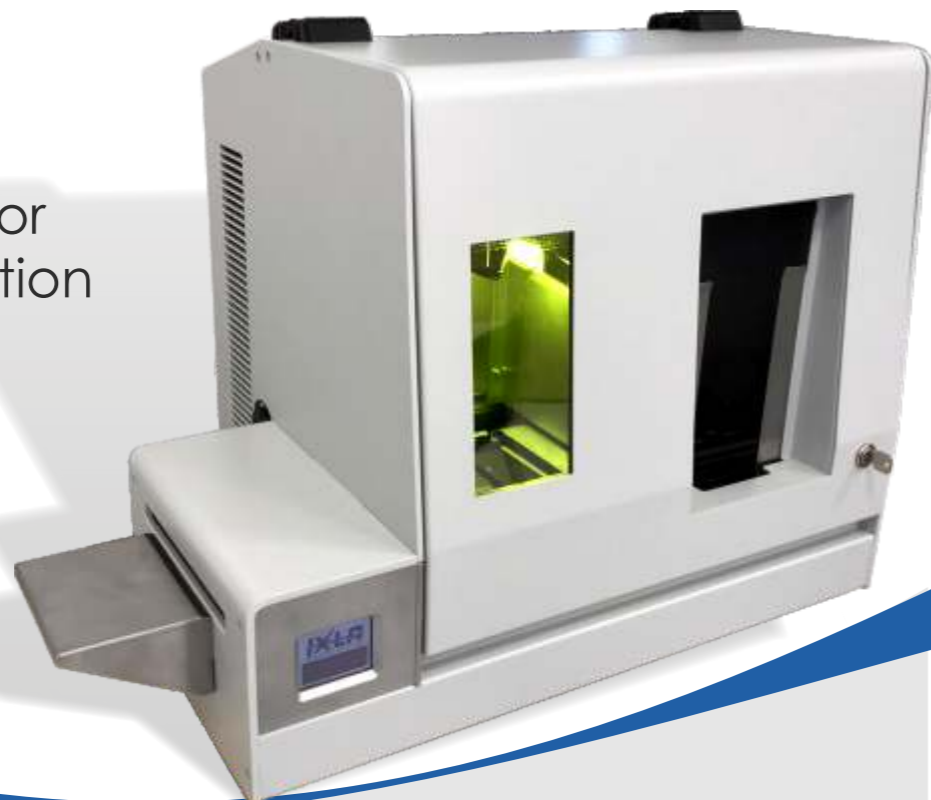


Any changes without prior notice - all rights reserved - IXLASrl



XP24 20W

hi-power laser printer for e-Passport personalization suitable for decentralized and centralized applications



XP24 20W

The XP24 20W laser printer is designed to simplify the laser personalization of e-Passports polycarbonate data-page. It represents an enhanced version of XP24 10W model. It can be used in decentralized applications and in centralized solutions by putting multiple units in cluster. The quality and the engraving speed, the CLI-SLI security feature made mechanical mechanism, MLI by mirrors⁽¹⁾, an automatic feeder for fast insertion of the booklet are important characteristics particularly valuable for sizable daily production of e-Passports.

⁽¹⁾ MLI technology licensed from Alltech GmbH



XP24 10W

XP24 10W

The XP24 10W laser printer is designed to simplify the laser personalization of e-Passports polycarbonate data-page. It represents an outstanding solution for decentralized offices thanks to a compact footprint. The quality and the engraving speed, the MLI security feature made by mirrors⁽¹⁾, an automatic feeder for fast insertion of the booklet are important characteristics particularly valuable for sizable daily production of e-Passports.

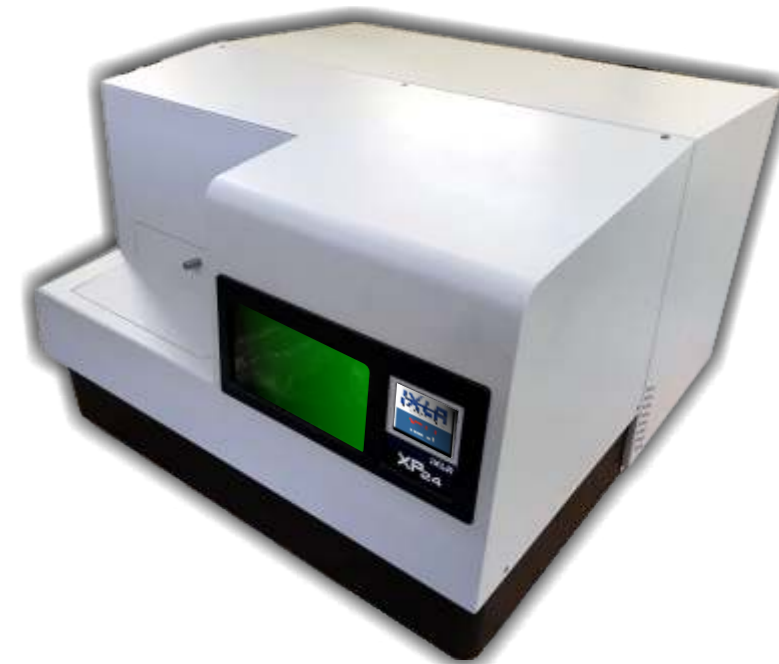
⁽¹⁾ MLI technology licensed from Alltech GmbH



Compact laser printer for e-Passport personalization
Ergonomics for decentralized applications

XP24 JET

for e-Passport personalization with laser and ink-jet technology



XP24 Jet

The XP24 JET is designed to fulfill the new demand for enhanced security in e-Passport personalization. In addition to XP24 features, it includes an ink-jet printer to print data and color images on the paper page of the new generation e-passport.

